

Check-In Scale Diagrams**Outcome SS4 Draw and interpret scale diagrams of 2-D shapes**

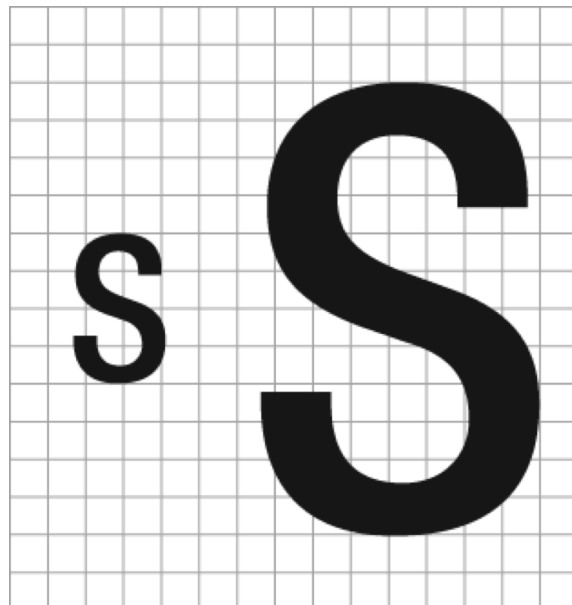
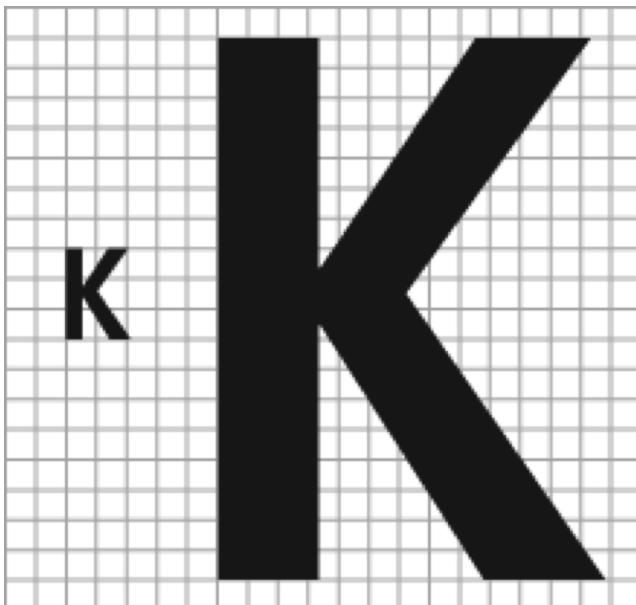
For #1 - 4, circle the choice that best answers the question.

- 1) An drawing with a scale of 8:1 means
 - a) 8 units of the actual measurement represents 1 unit of the diagram measurement
 - b) 1 unit of the actual measurement represents 8 units of the diagram measurement
 - c) 8 units of the diagram measurement represents 1 unit of the actual measurement
 - d) 1 unit of the diagram measurement represents 8 units of the actual measurement

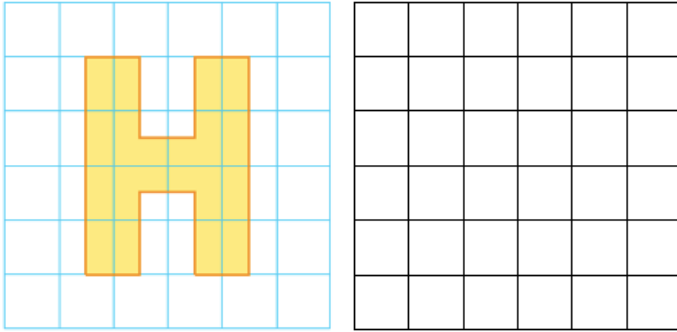
- 2) A scale factor less than 1 means
 - a) that the drawing is an enlargement of the actual object
 - b) that the drawing is the same size as the actual object
 - c) that the drawing is a reduction of the actual object
 - d) that the image is a different shape than the actual object

- 3) Compare the letter K on the right to the letter K on the left (see diagram below).
The letter on the right
 - a) has a scale factor equal to 1
 - b) has a scale factor less than 1
 - c) has a scale factor greater than 1
 - d) has no scale factor

- 4) What scale factor is used to enlarge the letter S on the left? (see diagram below)
 - a) 1
 - b) 2
 - c) 3
 - d) 4



- 5) Draw a reduction of the letter using the grid provided and a scale factor of $\frac{1}{2}$.



- 6) Owen made a drawing of his mountain bike. In the drawing, the diameter of the front wheel is 8 cm. The actual diameter of the front wheel is 60 cm. What scale factor did Owen use in his drawing?

- 7) The scale diagram of Hailey's dance studio uses a scale of 1:280. The length of the studio measures 10 cm in the diagram.

a) What is the actual length of the studio in centimetres?

b) What is the actual length of the studio in metres?

- 8) The ratio of length to width for a Canadian flag is 2:1. Assume you have a flag that is 12 cm wide.

a) What are the dimensions of a diagram of the flag that has a scale factor of 3.5?

b) What are the dimension of a diagram of the flag that has a scale factor of $\frac{3}{4}$?

Progress for Outcome SS4:

